



11 Eskdale Park Drive Seaham NSW

5  3  5 

Showcasing the cre'me de le cre'me of acreage living, this stunning portrayal of meticulous craftsmanship, luxury and amenity sets the tone for sophisticated elegance and lifestyle living.

Palatial in size with a multitude of dreamy spaces, you will find an abundance of windows throughout to frame the sunrises and sunsets with a blend of impeccable character details and a modern aesthetic.

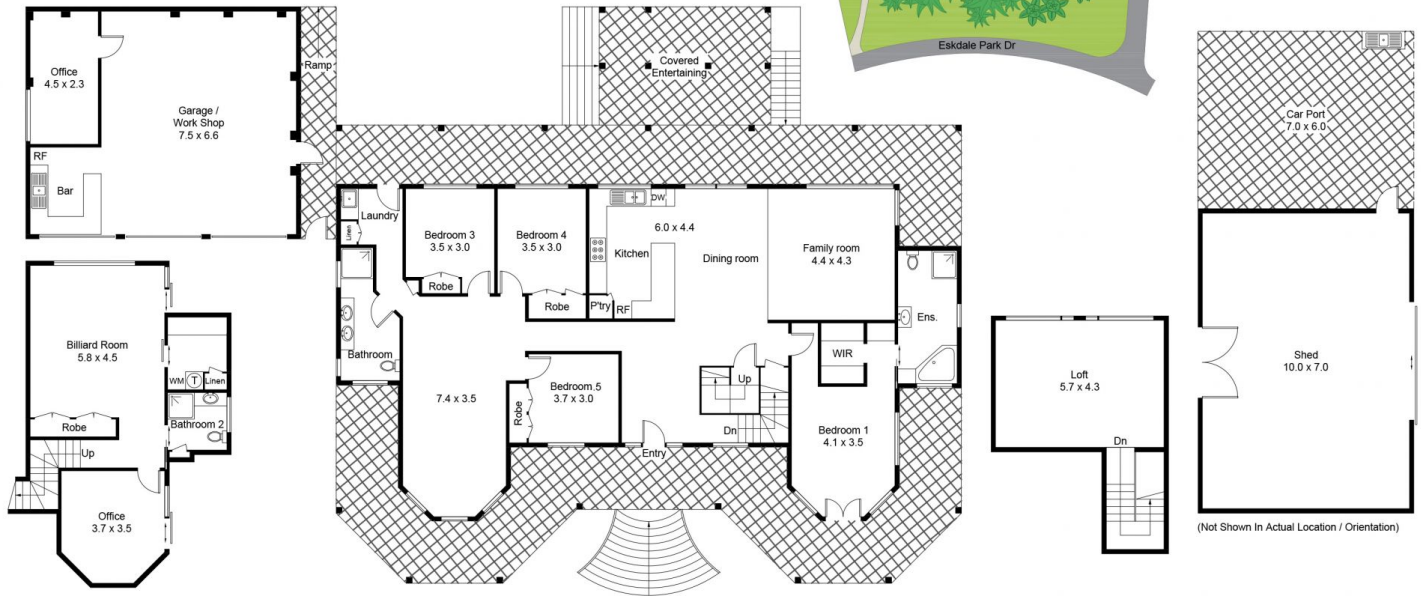
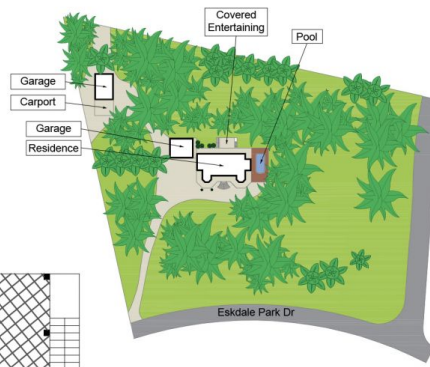
Offering the ideal venue for entertaining and quality family living, the open plan living zones radiate elegance and grandeur flowing through to the centrally located kitchen overlooking the living room.

A private master suite provides the ideal parents retreat walking onto the wrap around veranda overlooking the lush

Price : \$ 1,525,000
Land Size : 11000 sqm
View : <https://www.petersrealestate.com.au/sale/nsw/port-stephens/seaham/residential/house/7808332>



Lachlan Doyle
02 4933 7855



Bottom Floor = 55.7 Sq M

Middle Floor = 182.0 Sq M

Loft = 31.2 Sq M



Approximate Gross Internal Area = 408.1sq m (Including Garage / Shed)