



## 5 Swallow Avenue Woodberry NSW

3  1  2 

Set behind a white picket fence where modern luxury meets comfortable living, this charming residence offers a harmonious blend of style, functionality and space, making this the perfect family haven.

As you step inside, you'll be greeted by a welcoming neutral colour palette that sets the tone for the entire home where three generous bedrooms are adorned with built-in robes and ceiling fans, ensuring sufficient storage space for your needs.

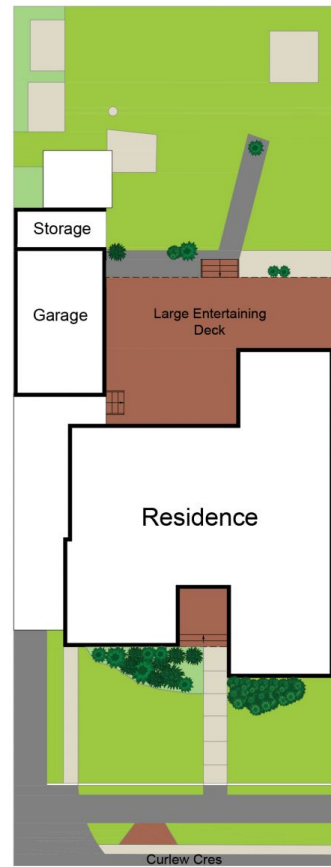
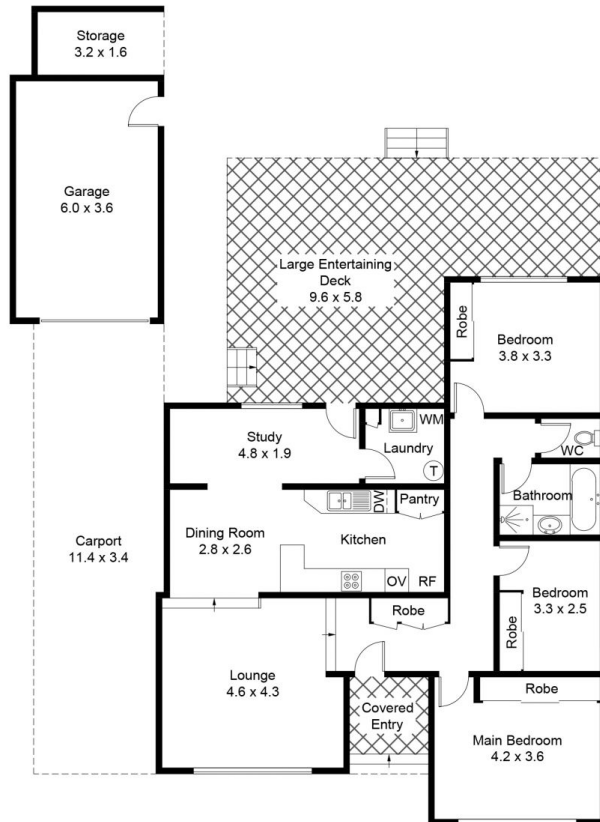
The bathroom boasts a contemporary design, with modern fixtures and a well-appointed layout - offering a pleasant and functional space, perfectly positioned to accommodate the growing family.

The heart of the home lies in its living area, where timber

**Price** : \$ 600,000  
**Land Size** : 582 sqm  
**View** : <https://www.petersrealestate.com.au/sale/nsw/hunter-valley-lower/woodberry/residential/house/7846719>



**Aimee Burns**  
**02 4933 7855**



(SITE PLAN NOT TO SCALE)



Approximate Gross Internal Area = 139.1 sq m  
(Including Garage / Storage)