

2/14 Lobelia Close Metford NSW

2  1  1 

2/14 Lobelia Close would make an ideal investment with a potential rental return of \$380 per week. 3/14 Lobelia Close is also available and is currently leased at \$380 per week with a fixed term lease in place until March 2024. Buy one or buy them both!

Located in Metford where you are spoilt for choice when it comes to lifestyle offerings, you are conveniently located just 2km to Stockland Greenhills with an array of specialty stores and dining options.

The residence presents an unmissable opportunity for savvy investors, representing an exciting chance to acquire the perfect buy for future growth & investment.

With an easy flowing floorplan over two levels providing a spacious living room at the entrance leading through to the

Price : \$ 380,000

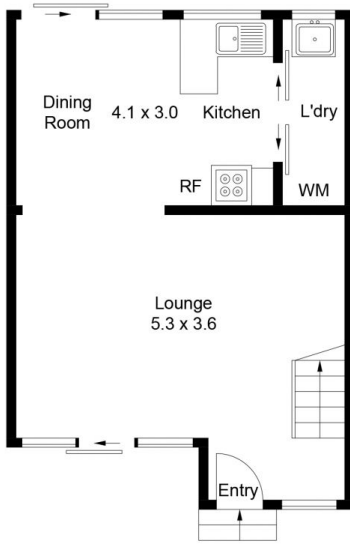
View : <https://www.petersrealestate.com.au/sale/nsw/hunter-valley-lower/metford/residential/unit/7867431>



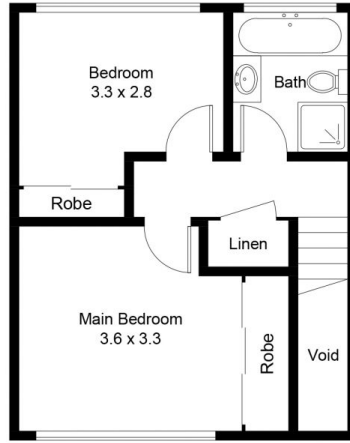
Aimee Burns
02 4933 7855



Adam Carruthers
02 4933 7855



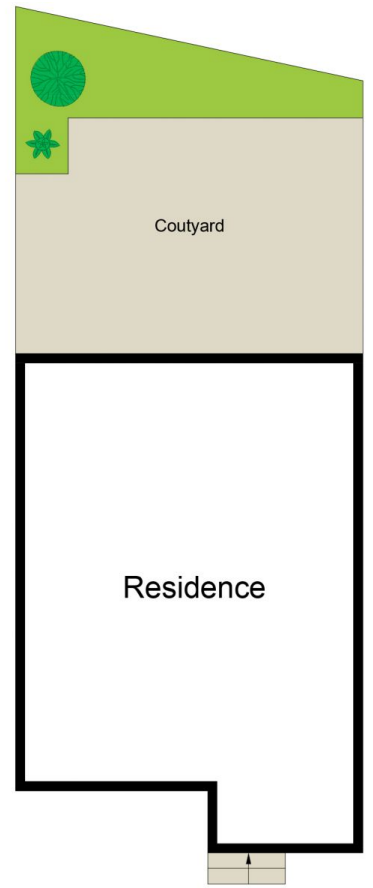
Ground Floor = 38.2 Sq M



First Floor = 35.8 Sq M



(Not Shown In Actual Location / Orientation)



(SITE PLAN NOT TO SCALE)

Approximate Gross Internal Area = 74.0 sq m