



8 Fonda Avenue Rutherford NSW

4  2  2 

Behind a striking facade with crisp contemporary lines, we welcome you to a home of luxury and lifestyle where a palette of neutral tones create a cutting-edge modern residence.

Where bespoke finishes and premium features combine to produce a residence of rare refinement and sophistication throughout a well-designed floorplan, a lavish layout and spacious proportions ensure all family members are treated to their own personal space and comfort. With four bedrooms perfectly positioned, the master hosts a striking ensuite, his and her walk in robes and the luxury of external access out to the covered alfresco. The remaining three bedrooms all perfectly proportioned and equipped with built-in robes.

Everyday activities and routines are catered to by a casual

Price : \$ 810,000

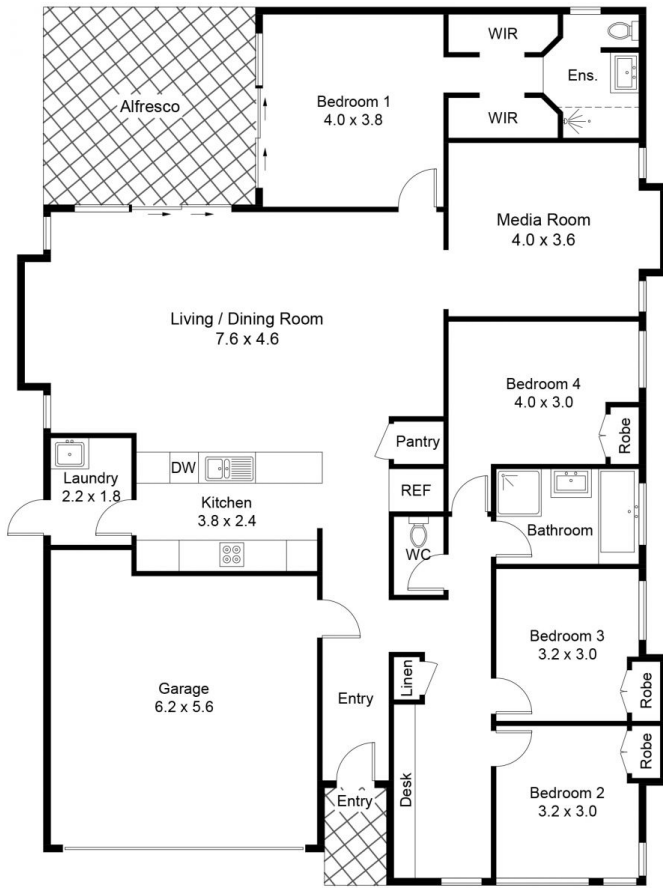
View : <https://www.petersrealestate.com.au/sale/nsw/hunter-valley-lower/rutherford/residential/house/7868232>



Jaide Van Wyck
4933 7855



Adam Carruthers
02 4933 7855



Approximate Gross Internal Area = 202.6 sq m (Including Garage)