



Peters

REAL ESTATE



113 Bolwarra Park Drive Bolwarra Heights NSW

4 2 3

Commanding a prestigious position on a beautifully proportioned 986sqm allotment, 113 Bolwarra Park Drive is a residence of rare calibre, where architectural character, bespoke finishes, and refined entertaining converge in one of Bolwarra Heights most tightly held addresses.

From the moment you enter, soaring exposed beam ceilings set a tone of understated luxury, enhancing the sense of scale and craftsmanship throughout the home. Living spaces flow effortlessly, anchored by a designer kitchen that is both visually striking and highly functional, appointed with a built-in oven and microwave and complemented by an outdoor serving bar that seamlessly connects interior elegance with alfresco entertaining.

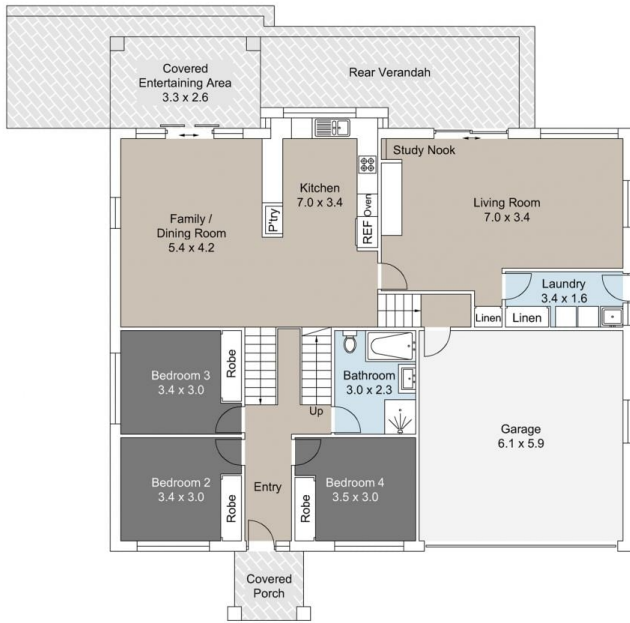
Type : House
Price : \$ 1,160,000
Land Size : 986 sqm
View : <https://www.petersrealestate.com.au/sale/nsw/hunter-valley-lower/bolwarra-heights/residential/house/8602181>



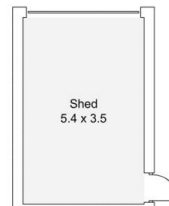
Aimee Burns
02 4933 7855

[For full version visit the website](https://www.petersrealestate.com.au)

<https://www.petersrealestate.com.au>



Ground Floor



(Not Shown In Actual Location / Orientation)



First Floor



113 Bolwarra Park Dr,
Bolwarra Heights

-  4 Bed
-  2 Bath
-  3 Car



Illustration for identification purposes only, measurements are approximate only and not to scale